



PRIVATE DINING

ORELLE

BIRMINGHAM



PRIVATE DINING

Orelle is situated in the heart of Birmingham's business district and comprises a restaurant, bar, all-day café and terrace serving a menu of classic and modern French dishes.

PRIVATE DINING ROOM

Seated - up to 16 guests

Standing reception - 20 guests

— NETWORKING —

CORPORATE LUNCH
OR DINNERS

— COCKTAIL PARTIES —

— PRIVATE EVENTS —

— PROPOSALS —





ORELLE

BIRMINGHAM

CANAPES £4.50 each

Chicpea Puisse, avocado, chilli (ve)

Wild Mushroom Arancini, aioli (v)

24 month comte warm cheese Gougeres

Beetroot Tart, preserved lemon, parmesan

'Fish & Chip', potato, taramasalata

PREMIUM CANAPES £5.50 EACH

Ham Hock, Picallili

Salmon Blini, fromage blanc

Crabe, dill emulsion, apple gel

Beef Tartare, shimej, marmite, egg yolk jam

SWEET CANAPES £4.50 each

Salted Caramel bon bons

Macarons

Pate de fruits (ve)

ORELLE SAMPLE MENU

3 courses £65.00

Beetrot (v)

Heritage beetroot, golden raisin, walnut, bitter leaves

Saumon

Barbequed loch dutar salmon, pickled kohlrabi, kalamansi, sourdough

Porc

Pig's head croquette, Jerusalem artichoke velouté, green apple, celery

~

Pithivier (v)

Squash, celeriac, oglesfield, mushroom, squash velouté

Bar

Line caught seabass, chervil root, golden raisin, artichoke velouté

Poulet

Ballotine, parsnip, pear, pickled mustard, jus gras

Filet £10 supplement

35-day dry aged fillet, miso glazed carrot, shallot, potato purée with peppercorn sauce

SIDES 5.50

Triple cooked new potatoes Potato purée Tenderstem broccoli, garlic, chilli

~

Calamansi

Calamansi mousseline, strawberry and mint jelly, puff pastry

Citrus Delice

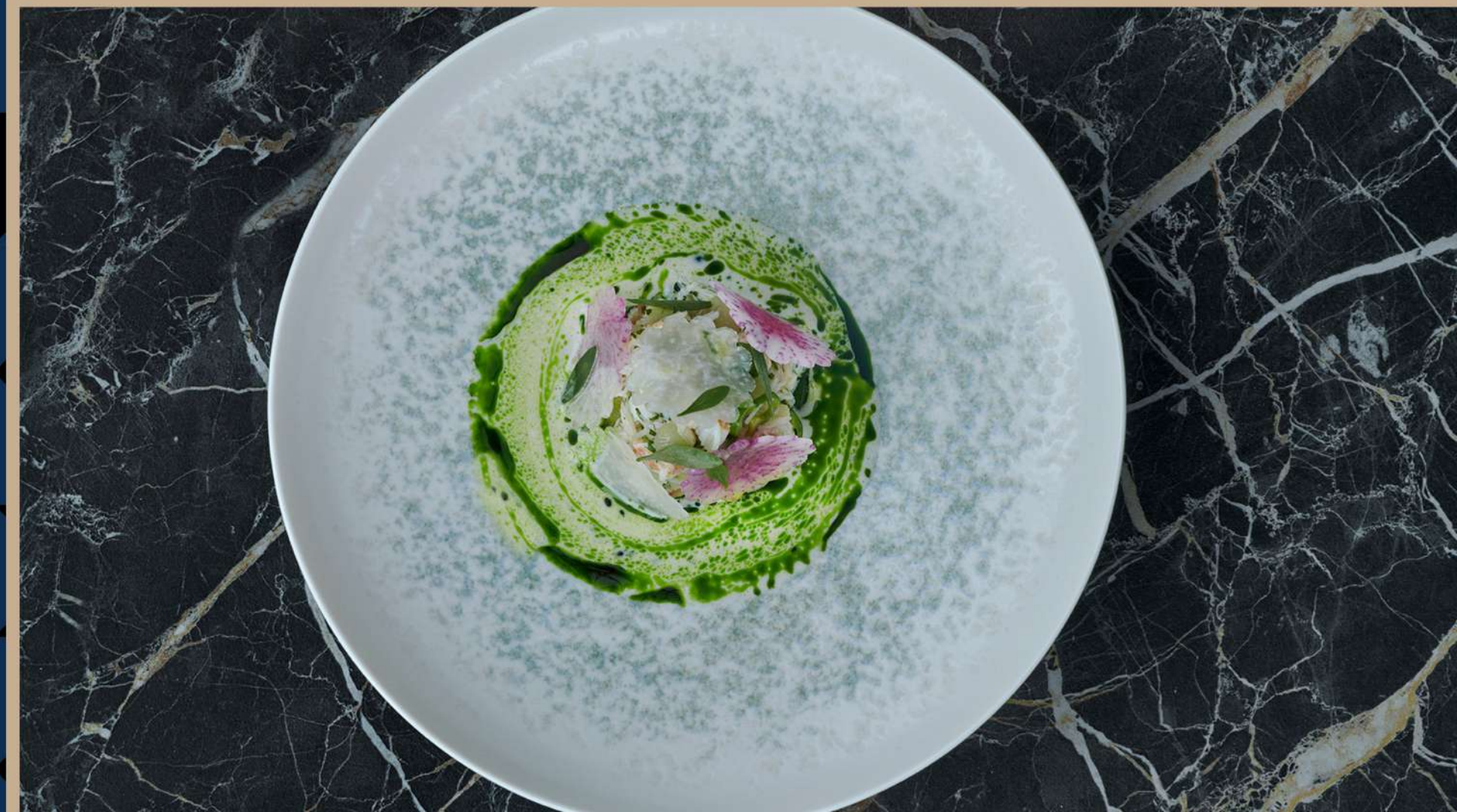
Kalamansi and passion fruit parfait, almond strawberry & mint jelly, crunchy lime biscuit

Brioche

Golden raisin, brioche, vanilla mousse white chocolate

Fromage

Farmhouse cheese, golden raisin & quince chutney, house oat biscuits
(£7 supplement)



A high-rise lounge with a bar and a panoramic city view. The bar is on the left, featuring a gold-colored metal frame with shelves holding various bottles of alcohol and hanging crystal glasses. The lounge area is furnished with blue upholstered chairs and small round tables. Large floor-to-ceiling windows on the right offer a panoramic view of a city skyline at dusk, with a prominent building under construction visible in the distance.

For more information or to make an enquiry, please email our Group Sales and Events Manager at ChristinaKr@danddlondon.com